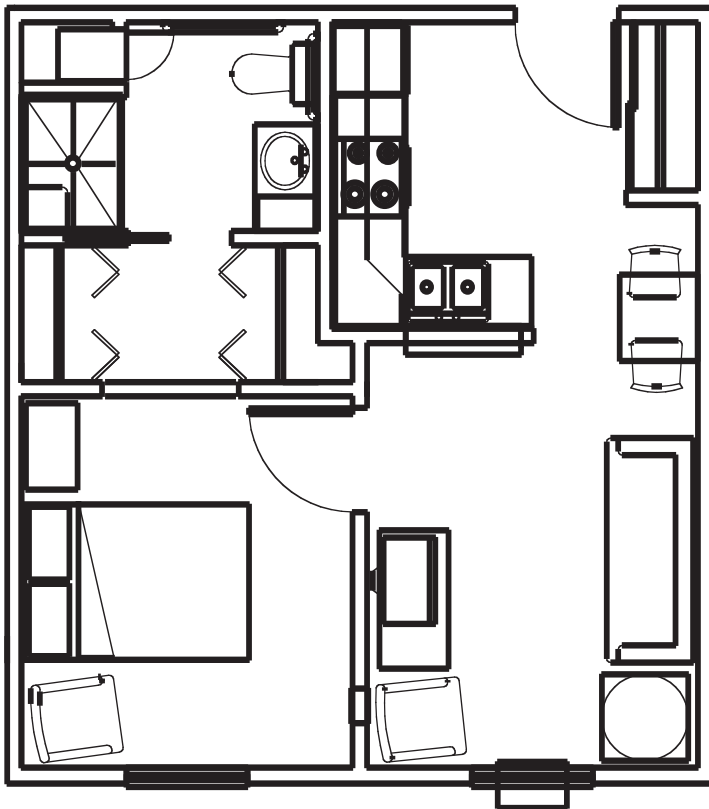


Assisted Living Units

Unit A
440 Sq. Feet
1 bedroom/1 bath

Effective December 1, 2007

- 3 meal plan \$1,888 per month
- 2 meal plan \$1,855 per month
- 1 meal plan \$1,822 per month



Assisted Living Units

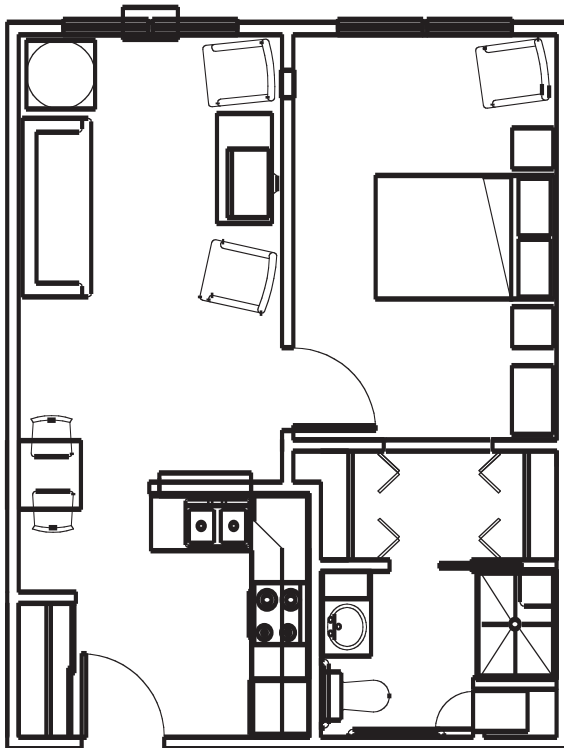
Unit B
520 Sq. Feet
1 bedroom/1 bath

Effective December 1, 2007

- 3 meal plan: \$2,003/month
- 2 meal plan: \$1,970/month
- 1 meal plan: \$1,937/month

With additional person:

- 3 meal plan: \$2,699/month
- 2 meal plan: \$2,633/month
- 1 meal plan: \$2,567/month



Assisted Living Units

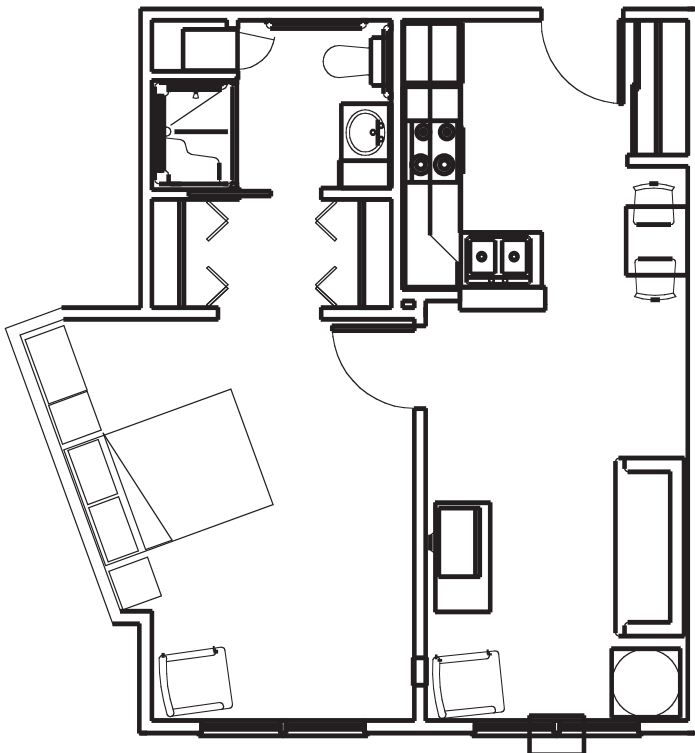
Unit B-1
555 Sq. Feet
1 bedroom/1 bath

Effective December 1, 2007

- 3 meal plan: \$2,067 / month
- 2 meal plan: \$2,034 / month
- 1 meal plan \$2,001 / month

With additional person:

- 3 meal plan: \$2,758 / month
- 2 meal plan: \$2,692 / month
- 1 meal plan: \$2,626 / month



Assisted Living Units

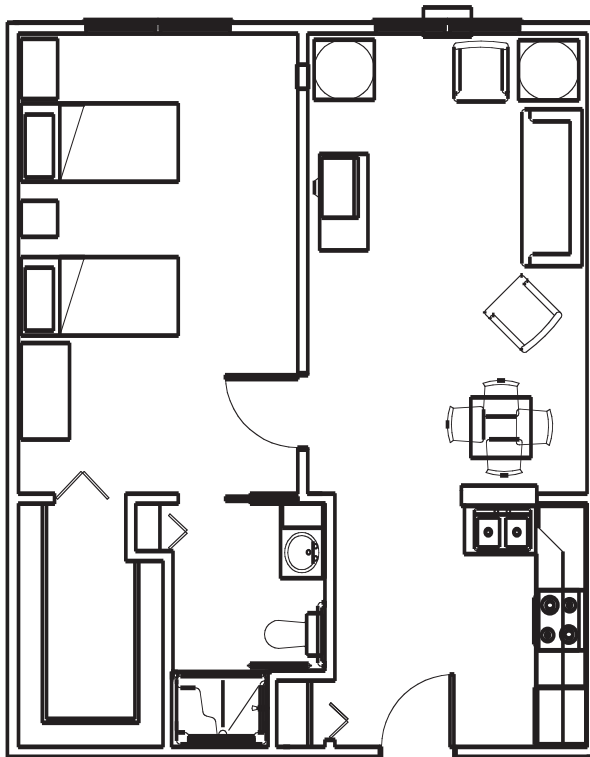
Unit C
720 Sq. Feet
1 bedroom / 1 bath
With Large Walk-In Closet

Effective December 1, 2007

- 3 meal plan: \$2,275 / month
- 2 meal plan: \$2,242 / month
- 1 meal plan: \$2,209 / month

With additional person:

- 3 meal plan: \$2,983 / month
- 2 meal plan: \$2,917 / month
- 1 meal plan: \$2,851 / month



Assisted Living Units

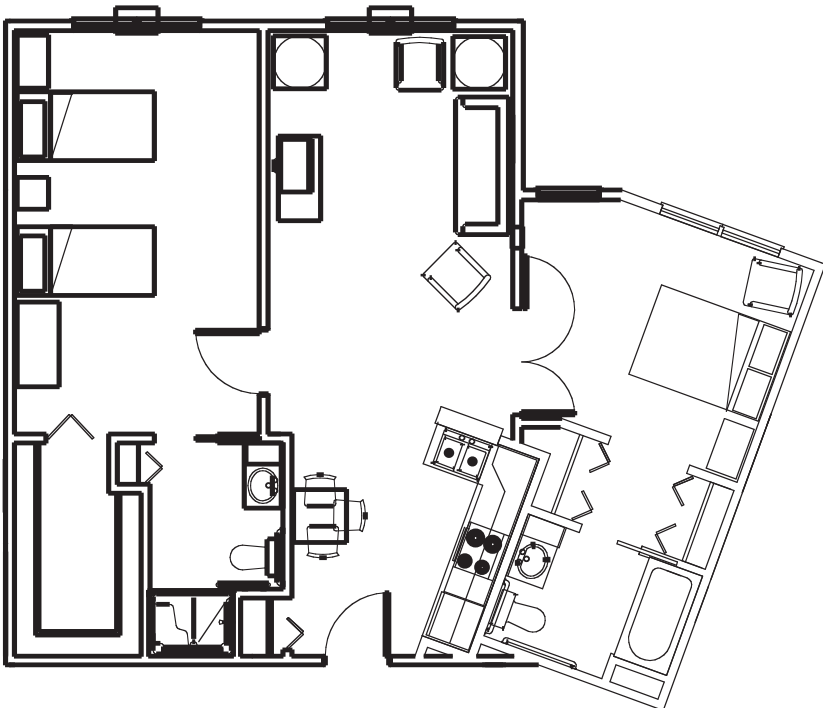
Unit D
960 Sq. Feet
2 bedroom/2 bath

Effective December 1, 2007

- 3 meal plan: \$2,518/month
- 2 meal plan: \$2,485/month
- 1 meal plan: \$2,452/month

With additional person:

- 3 meal plan: \$3,210/month
- 2 meal plan: \$3,144/month
- 1 meal plan: \$3,078/month



Assisted Living Units

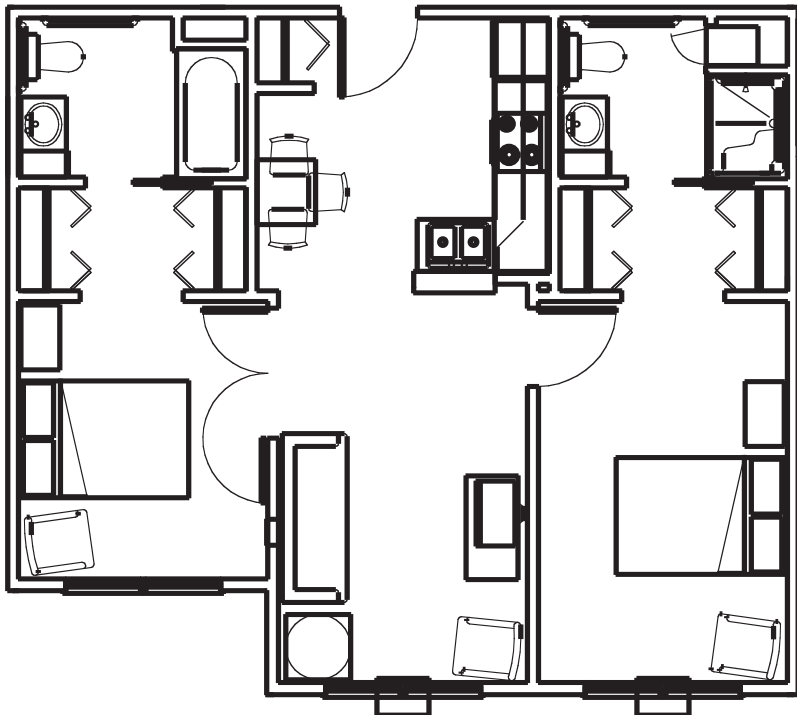
Unit E
740 Sq. Feet
2 bedroom/2 bath

Effective December 1, 2007

- 3 meal plan: \$2,391 / month
- 2 meal plan: \$2,358 / month
- 1 meal plan: \$2,325 / month

With additional person:

- 3 meal plan: \$3,093 / month
- 2 meal plan: \$3,027 / month
- 1 meal plan: \$2,961 / month





24-Unit Complex with Six Floor Plans Available
Security Deposit: \$1,500

Assisted Living Included Services

- Meals, According to Meal Plan Purchased
- Basic Cable Service
- Water, Gas & Electricity
- Weekly Housekeeping
(Includes vacuuming, dusting, and general cleaning as well as laundering of bed linens and towels.)
- No Charge Laundry Facilities
- Social Events and Activities
- Interior and Exterior Maintenance
- Emergency Call System
- 24 Hour Staff Availability
- Companionship
- Use of All Common Areas including Court Yard, Deck and Three-Season Room
- Property Taxes and Building Insurance
(Does not include personal property)
- Wellness Promotion and Exercise Program
- Personal Care Needs Assessments and Reassessments by a Registered Nurse
- Short-Term Guest Overnight in Apartment
- Free Parking

Assisted Living Optional Services

Available for a Pre-determined Fee

- Assistance with Activities of Daily Living \$16.00 / Hour
(Charged in 15 minute increments)
- Barber/Beautician Service Local Providers
- Eye Drop Administration \$50.00 / Month
- Guest Meals \$5.00 / Meal
- Medication Planning \$2.25 / Day
- Personal Laundry Services \$5.00 / Load
- Registered Nurse services \$30.00 / Hour
(Injections, dressing changes, etc. Charged in 15 minute increments. Fee does not include supplies.)
- Transportation Jo Daviess County Transit
- Telephone Services Local Providers